

DAEWOO

SKID STEER LOADER

430 Plus
440 Plus
450 Plus
460 Plus

DAEWOO SKID STEER LOADERS

*Enhanced Operators Comfort
Easy Maintenance & Serviceability
Reliable & Powerful Engine
Environment-Friendly*



DAEWOO
DAEWOO HEAVY INDUSTRIES &
MACHINERY LTD.

DAEWOO SKID S

By successfully conducting large-scale field surveys and testing its performance and durability in the Reliability Center of DHI, the Daewoo SSL Line up now presents significant improvement in operators comfort and safety, performance and reliability. With rigid structures and high performance, Daewoo skid steers offer durability and high productivity in various operations of construction, industrial, rental and agriculture.



430 Plus
Rated Operating Capacity
1450lb (658 kg)
45hp Diesel Engine



440 Plus
Rated Operating Capacity
1850lb (839 kg)
47hp Diesel Engine



450 Plus
Rated Operating Capacity
1950lb (885 kg)
65hp Diesel Engine

STEER LOADERS



460 Plus
Rated Operating Capacity
2250lb (1020 kg)
65hp Diesel Engine



● Power & Performance



Powerfull Diesel Engine

- A2000 ; 2.0L
- A2300 ; 2.3L

Cummins "A" Series Diesel engine are designed for all-rounded application with power and economy. The characteristic of torque curve at low speed allow excellent durability and low noise at any tough operation. For the better serviceability, all service is accessible from one side of engine. It is outstanding serviceability. (Complied with EPA Tier II Regulations)



3.3L Diesel Engine(B3.3)

This Cummins B3.3 new diesel engine is designed exclusively for industrial vehicle applications. Especially optimized engine design provide high efficient fuel consumption, low noise, low emission at all tough application. Furthermore longer service interval will adding an advantages to its value. (Complied with EPA Tier II Regulations)

Operators Comfort



(430, 450 Series)

Easy-To - Read Instrument Panel

Engine coolant temperature, transmission oil and fuel level gauges keep the driver aware of the machines's operating condition.



Fully Protected Quicktatch

Daewoo's simple attachment system lets you switch from a bucket to a sweeper to a dozer blade in seconds. All hydraulic lines and fittings are protected inside the boom arms from damage resulting from contact with any debris.

Enhanced Operators Environment

The ergonomically designed operator compartment is very spacious. Control levers fall naturally into the operator's right and left hands. The control grips are comfortable to hold for long periods of productive work. Dampened controls give the engine operator a smooth feel.

Daewoo Clean View Cab

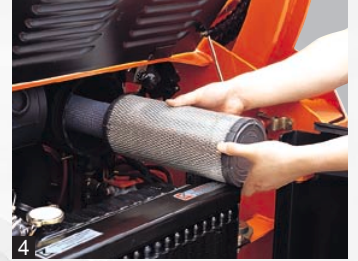
Hi - visible canopy provides optimum visibility in any direction in work condition



Three Working Lights

Three standard halogen lights, mounted on three corners of the ROPS/FOPS illuminate very well for night job site and job inside dark building.

Easy Maintenance



1, 2. One-touch button type fuel and hydraulic oil cover provide convenience as well as vandal protection. The fuel with key lock is kept more secure.

3. The fuel/water separator is located easy to access by rear door side.

4. No tools are needed to change and clean the air filter.



5. The oil cooler on Daewoo skid steer loaders will swing out for easy clean-out between the oil cooler and the radiator.



► Easy access for service through rear door and wide opened operator's canopy.



Main Features of 430&450 Series

- ✓ Conventional linkage boom provides compact maneuverability and operation.
- ✓ Easy to see instrument and integral switch panel with room lamp.
- ✓ Great serviceability with tilting cab, wide open rear door, engine hood and swing-out oil cooler
- ✓ Clean pedal with inclined floor plate and cleaning holes.
- ✓ Easy entrance and exit with boom cross member.

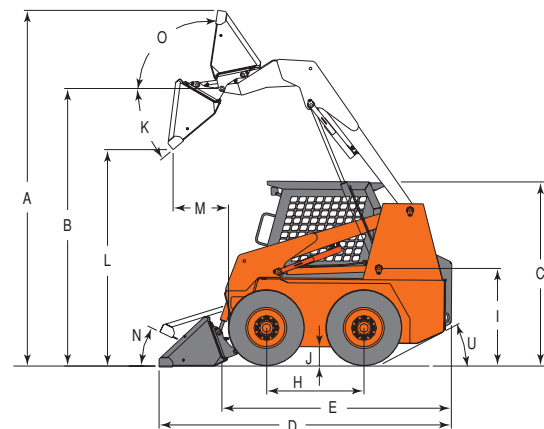
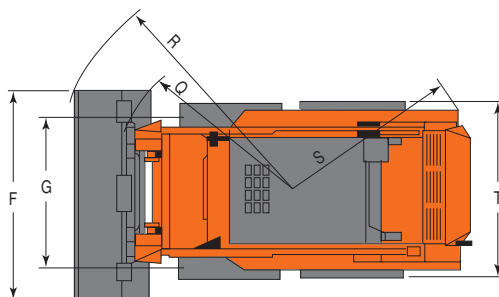
SPECIFICATIONS

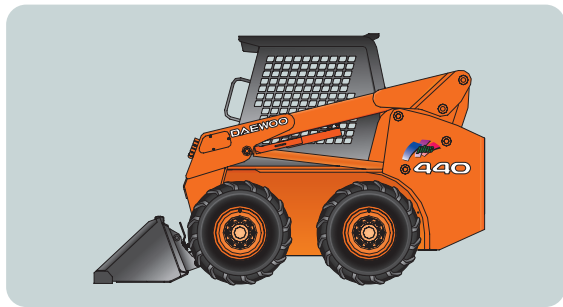
Model		430Plus	450Plus
● Operating Performance			
Rated Operating Capacity	lb(kg)	1450(658)	1950(885)
Operating Weight	lb(kg)	5646(2561)	6911(3135)
Bucket Capacity	ft³(m³)	11.0(0.31)	13.5(0.38)
Breakout Force (Bucket)	lb(kg)	2634(1195)	3770(1710)
Breakout Force (Boom)	lb(kg)	2910(1320)	5004(2270)
Tipping Load	lb(kg)	2910(1320)	3902(1770)
Speed, Forward	mph(kph)	7.5(12.1)	7.4(12.3)
Reverse	mph(kph)	7.5(12.1)	7.4(12.3)
Tires-Flotation		10-16.5 6PR	12-16.5 8PR
Hydraulics Standard Flow	gpm(lpm)@bar	11.8(44.8)@175	21.7(82.0)@207
High Flow	gpm(lpm)@bar	25.9(98.0)@175	32.3(122.3)@207

● Engine			
Manufacturer		Cummins	Cummins
Model		A2000	B3.3
Rated output	hp(ps)@rpm	45(45.7)@2,800	66.0@2,600
Fuel / Tank Capacity	gal(L)	Diesel / 13.6(52.4)	Diesel / 18.2(70)
Displacement	in³(cc)	122.0(2,000)	198.9(3,260)
Cylinders		4	4
Torque	ft.lb(kg.m)@rpm	101.3(14.0)@1,600	157.7(21.8)@1,600

● Dimensions			
A - Height at Maximum Extension	in(mm)	142.4(3617)	153.2(3892)
B - Hinge Pin Height	in(mm)	112.0(2845)	119.9(3045)
C - R.O.P.S. Height	in(mm)	76.1(1934)	79.3(2015)
D - Length with Bucket	in(mm)	120.0(3047)	126.5(3212)
E - Length without Bucket	in(mm)	93.3(2371)	100.1(2543)
F - Width with Bucket	in(mm)	61.5(1562)	67.5(1713)
G - Track Width	in(mm)	48.1(1222)	53.1(1350)
H - Wheelbase	in(mm)	37.7(957)	41.8(1061)
I - Seat Index Point	in(mm)	37.8(959)	40.9(1040)
J - Ground Clearance	in(mm)	7.5(190)	8.6(218)
K - Dump Angle	deg	45°	40°
L - Dumping Height	in(mm)	86.3(2192)	91.5(2323)
M - Maximum Reach	in(mm)	20.4(518)	22.5(572)
N - Max. Rollback at Ground	deg	25°	26°
O - Max. Rollback - Extended	deg	94°	98°
Q - Clearance Circle w/o Bucket	in(mm)	46.6(1183)	45.1(1146)
R - Clearance Circle with Bucket	in(mm)	71.0(1804)	74.1(1883)
S - Clearance Circle - Rear	in(mm)	60.4(1534)	62.7(1593)
T - Width w/o Bucket	in(mm)	58.5(1486)	65.4(1662)
U - Departure Angle	deg	27°	28°

● DIMENSIONAL DRAWINGS





Main Benefits of 440&460 Series

- ✓ Vertical linkage boom provides great reach and higher dump
- ✓ Easy to see instrument and integral switch panel with room lamp.
- ✓ Great serviceability with tilting cab, wide open rear door, engine hood and swing-out oil cooler
- ✓ Clean pedal with inclined floor plate and cleaning holes.
- ✓ Easy entrance and exit with boom cross member.

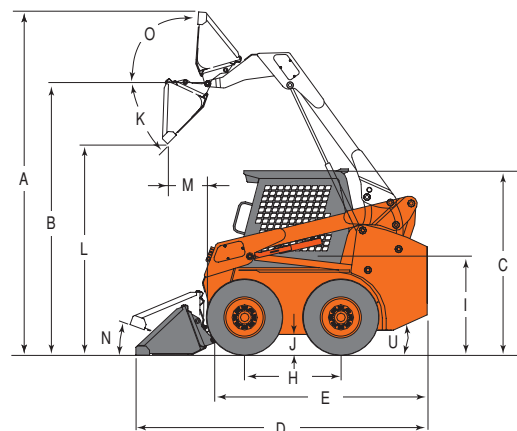
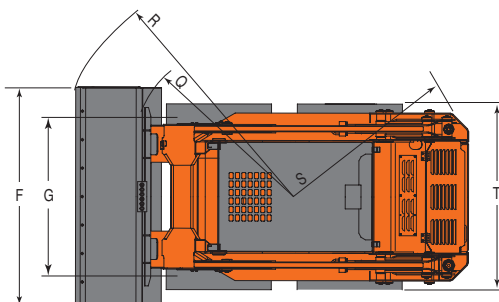
SPECIFICATIONS

Model		440Plus	460Plus
● Operating Performance			
Rated Operating Capacity	lb(kg)	1850(839)	2250(1020)
Operating Weight	lb(kg)	6133(2782)	7174(3254)
Bucket Capacity	ft ³ (m ³)	11.9(0.34)	14.1(0.40)
Breakout Force (Bucket)	lb(kg)	2910(1320)	3770(1710)
Breakout Force (Boom)	lb(kg)	3285(1490)	5194(2356)
Tipping Load	lb(kg)	3946(1790)	4339(1968)
Speed, Forward	mph(kph)	7.3(11.8)	7.4(12.3)
Reverse	mph(kph)	7.3(11.8)	7.4(12.3)
Tires-Flotation		10-16.5 8PR	12-16.5 8PR
Hydraulics Standard Flow	gpm(lpm)@bar	15.8(59.8)@207	21.7(82.0)@207
High Flow	gpm(lpm)@bar	27.5(104)@207	32.3(122.3)@207

● Engine			
Manufacturer		Cummins	Cummins
Model		A2300	B3.3
Rated output	hp(ps)@rpm	47(47.7)@2,600	65(66.0)@2,600
Fuel / Tank Capacity	gal(L)	Diesel / 14(54)	Diesel / 15.6(60)
Displacement	in ³ (cc)	139.8(2,290)	198.9(3,260)
Cylinders		4	4
Torque	ft.lb(kg.m)@rpm	110.7(15.3)@1,600	157.8(21.8)@1,600

● Dimensions			
A - Height at Maximum Extension	in(mm)	145.8(3704)	156.2(3967)
B - Hinge Pin Height	in(mm)	114.8(2915)	122(3100)
C - R.O.P.S. Height	in(mm)	76.9(1954)	80.1(2035)
D - Length with Bucket	in(mm)	126.3(3208)	126.0(3200)
E - Length without Bucket	in(mm)	99.3(2521)	100.1(2543)
F - Width with Bucket	in(mm)	63.4(1611)	70(1778)
G - Track Width	in(mm)	48.1(1222)	53.1(1350)
H - Wheelbase	in(mm)	42.3(1074.8)	41.8(1061)
I - Seat Index Point	in(mm)	37.8(959)	40.9(1040)
J - Ground Clearance	in(mm)	7.5(190)	8.6(218)
K - Dump Angle	deg	45°	44°
L - Dumping Height	in(mm)	87.6(2224)	93.6(2378)
M - Maximum Reach	in(mm)	25.4(645)	27.3(694)
N - Max. Rollback at Ground	deg	25°	26°
O - Max. Rollback - Extended	deg	94°	94°
Q - Clearance Circle w/o Bucket	in(mm)	51.3(1304)	45.1(1146)
R - Clearance Circle with Bucket	in(mm)	74.8(1901)	76.3(1939)
S - Clearance Circle - Rear	in(mm)	63.3(1607)	61.8(1570)
T - Width w/o Bucket	in(mm)	58.5(1486)	65.4(1662)
U - Departure Angle	deg	27°	28°

● DIMENSIONAL DRAWINGS



DAY IN... DAY OUT... DAEWOO.

Workers rely on Daewoo equipment to help them get the job done... day in and day out. That's because Daewoo offers a wide range of quality, reliable compact equipment at a competitive price.

Daewoo is committed to building the most reliable, durable and productive equipment in the world. It has been in the heavy equipment industry for over a half-century and uses the experience and maximum work performance. Daewoo achieves this with its continued focus on customers. quality and value."



BUY IT WITH CONFIDENCE

The number one concern when buying skid steer loader is reliability. If it doesn't start, you can't get the job done. And that spells trouble for your business and your customers.

That's why you should always choose Daewoo. You can be assured of true quality because it's designed into each machine. From the early stages of product development, through manufacturing and quality testing, Daewoo equipment is built to work when you need it for as long as you need it. After all, isn't that what every piece of equipment should do for you?

THE CLEAR CHOICE

We realize there are many options for skid steer loader. We also know that each purchase decision is a very important one. One bad purchase can really set you back - not just in terms of production time, but in the eyes of your customer.

But when you select Daewoo, you're not just buying equipment, you're buying peace of mind. That's because everyone at Daewoo, from sales to service to manufacturing, has a singular commitment to make sure you're satisfied with the equipment. When you've got that many people focused on quality, you can keep focused on your most important responsibility: the job.

SC1053A(Jan./04)



Head Office : 7-11, Hwasu-Dong, Dong-Gu, Incheon, Korea.
Tel : 82-32-760-1706
Fax : 82-32-760-6173

Seoul Office : 8th floor Daewoo Heavy Industries & Machinery Bldg,
14-34, Youido-Dong, Youngdungpo-Gu,
Seoul, 150-010, Korea.
Tel : 82-2-2167-3114
Fax : 82-2-3775-1504

Web site : www.daewooforklift.com

AUTHORIZED DEALER